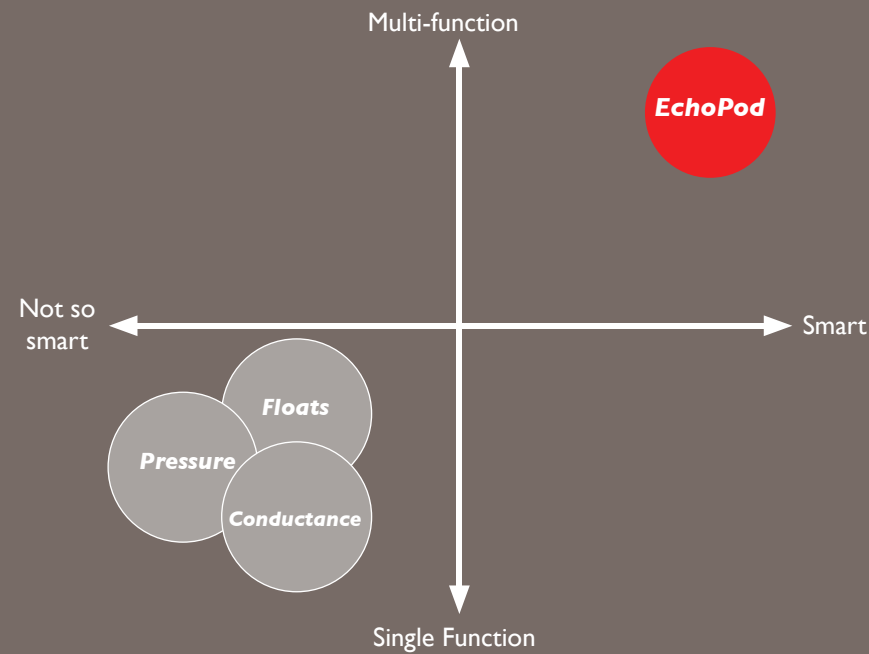


## EchoPod Opportunity

*Multi-function and smart*

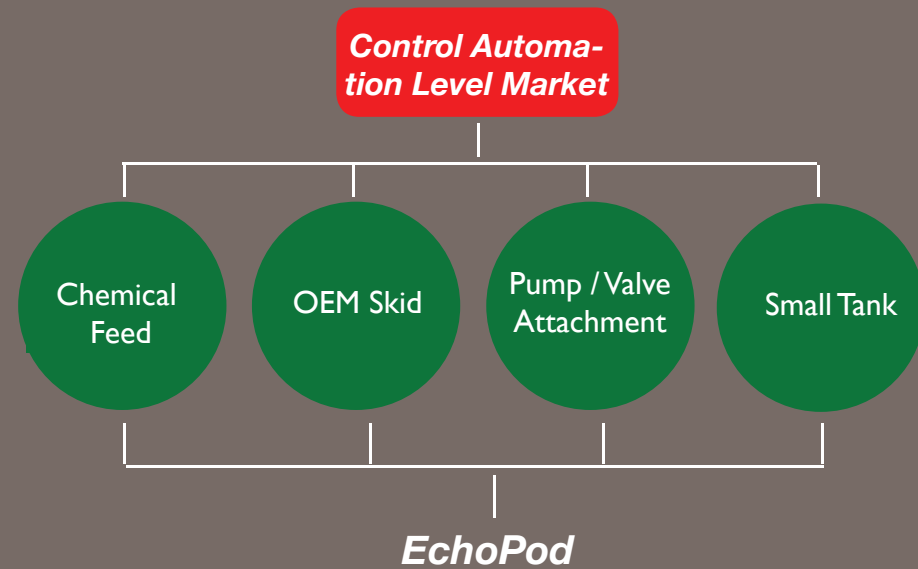
- Replace pressure, float and conductance sensors with a “smart” EchoPod
- Higher reliability and accuracy, allowing for a more precise and efficient process with less downtime
- No more maintenance or sensor replacement from dirty, sticky and corrosive media
- Accurate and simple configuration makes retrofit of applications quick and easy
- Durable and non-corrosive materials makes EchoPod a long-term solution



## EchoPod Positioning

*Total small tank solution*

- 4 point relay control allows for multiple alarm, pump and valve set-points in one sensor
- Integrated intelligent control allows for easy automation of chemical feed, metering pumps or actuated valve applications
- 4-20 mA output enables seamless PLC or control logic system integration of OEM skid applications
- WebCal creates document and configuration control, program one or a hundred EchoPods with identical configurations



## About Flowline - We Do Your Level Best

Flowline supplies industrial manufacturers and municipalities with quality tank inventory monitoring, automation and safety solutions for corrosive liquids.

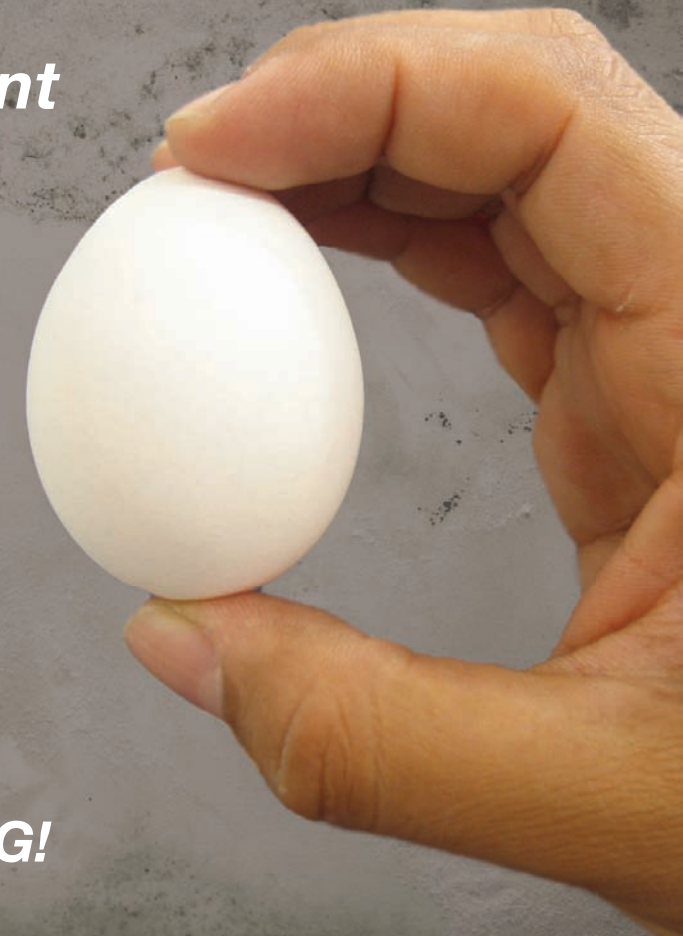
Demand for chemical storage and feed systems has grown steadily since the 1960's, fueled by industrial automation, municipal water treatment and environmental regulations. As a result, Flowline introduced the first family of thermoplastic liquid level sensor, installation and control technologies for water-based chemicals.

Our core competency is non-contact level measurement using our patented digital signal processing technology that makes level simple. Flowline primarily serves the water, wastewater, chemical, health and electronics industries. We enable users to best manage their liquid assets with dependable level solutions that reduce fluid handling costs.

Design or process engineering, system integrator, original equipment and maintenance users are well served through our global network of technical distribution partners. Together, we deliver innovative solutions that automate containment processes, ensure workplace safety and protect our environment.

# EchoPod

## Level Measurement



*think small, WIN BIG!*

Introducing EchoPod®, an integrated control automation solution that provides non-contact level measurement with switch and control. Designed for small tanks, EchoPod replaces floats, pressure and conductance sensors.

**FLOWLINE**  
We Do Your Level Best

**Sales Representative:**

**icenta CONTROLS Ltd, North Station Yard, Warminster Road, Wilton, Salisbury, SP2 0AT**  
Tel: 0845 895 1020 Fax: 0845 895 1021 Email: sales@icenta.co.uk www.icenta.co.uk

## How Does It Benefit Me?

### Made for small tank applications

- Compact design allows for installation in applications with limited mounting options and space
- Miniature 2" dead band allows for maximum fill of media
- Multi-function capabilities eliminates additional components

### Non-contact benefits in a small package

- Higher accuracy with no moving parts
- Measures dirty, sticky and corrosive media without affecting product performance
- Advanced Digital Signal Processing (DSP) provides advanced surface imaging in applications with obstacles in the beam width

### Low cost of ownership

- Economical to purchase and install
- A single unit can provide switch, control and measurement capabilities simultaneously or individually, depending on your application
- No moving or exposed parts, virtually maintenance free

### Fast and easy configuration

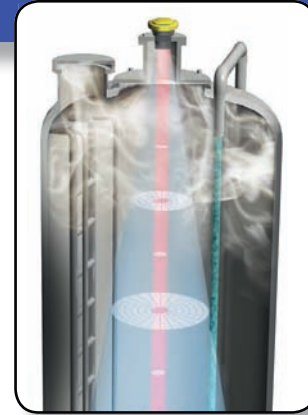
- Free software download, WebCal, provides accurate configuration in small tanks
- Simple pre-programmed menus let you select over 167 different configurations
- WebCal provides configuration documentation control, custom wiring diagrams and the ability to save / load application configurations

Non-contact level sensors are widely specified in bulk storage applications, but they do not meet the cost, size and functional requirements of small tank system providers. A small tank system is often specified with a process tank (5-250 gallons) pump / actuated valve and level switch. Small tanks have traditionally used floats, conductance and pressure sensors to measure and automate their process. This required multiple components, which adds expense and installation time. Once installed, these sensing technologies can't always provide reliability because of the characteristics of the media they are measuring. While their initial cost is low, these sensors often fail due to contact with sticky or corrosive media requiring expensive field maintenance and / or replacement, increasing the operating cost.

## How Does EchoPod Work?

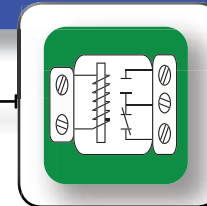
### DSP Technology

- Allows measurement in limited space
- 2" beam width column
- 2" dead band for maximum fill capacity



### Level Switch

- 4 programmable 1 A SPST relays
- High or low alarms
- Pump / valve control



### Level Controller

- 1 or 2 pump / valve operation
- Simplex, duplex, lead / lag



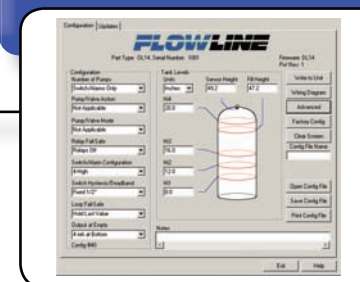
### Level Measurement

- 4 - 20 mA analog output
- Reversible output signals



### WebCal Software

- Fast, accurate and simple configuration
- Documented configuration control



### Dirty, Sticky, Corrosive Media

- PVDF transducer
- NEMA 4X housing
- Potted for additional durability



## Where Can I Use It?

EchoPod's design and performance capabilities position it well for applications focused on control or process automation in machines, tools or skids:

- Industrial water treatment / make-up
- Wastewater management / processing
- Chemical feed and mini-bulk storage
- Control automation regarding auto fill / empty, batching, mixing or dispensing

## Potential Applications

### Water & waste water

- Process water
- Remediation
- Neutralization

### Health Care

- Pharmaceutical
- Laboratory
- Disinfecting
- Dialysis

### Food & beverage

### Bio-Tech

### Semi-conductor

### Lubricants

### Swimming pools

### Water parks

### Paints

### Rubber

### Agriculture

### HVAC

- Boilers
- Cooling towers

### Cleaning

- Laundry
- Car wash

### Marine

### Mining

### Chemical

### Electric power

### Pulp & paper

