

# Software get red-y (version 5)

Efficient device management for the thermal mass flow meters & controllers of the red-y smart series

**With the free get red-y software, users now have PC access to all connected Vögtlin measuring and control devices. Beside displaying key information, users can also view and modify various operating parameters. Thanks to intelligent device monitoring, the software is a perfect service and analysis tool, e.g. to check and adjust settings.**



Fig.1 The software get red-y 5 communicates via an USB cable with a red-y smart mass flow controller



## Device information

- » Display all key device information, e.g. reading, temperature, total, valve voltage etc.
- » Specify a setpoint for flow and pressure controllers
- » Assign a device name, e.g. name of measuring point ID
- » Change the device address (Modbus, Profibus)
- » Visualization of measured data
- » Adjust the control speed



## Operating state monitoring

The software monitors key operating parameters and indicates irregularities such as:

- » Sensor and communication errors
- » Unusual device behavior (instability, contamination, etc.)



## Switch measurement units & gas type

- » Select the desired units of measurement
- » For devices that have been calibrated for several different gases (multigas), user can switch to different stored gas data sets



## Plug & play with USB cable

Digital communication cable USB/RS485 (PDM-U Art. 328-2169) and versatile cable accessories ensure that measurement and control devices can be operated troublefree from the PC.

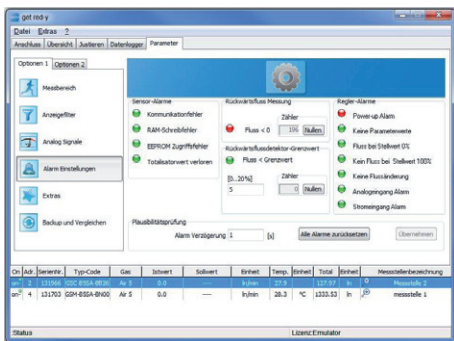


Fig.2 Tab with information on the operating state



## Datalogger (optional)

- » Visualize and log all measured data
- » Export as CSV file for further use in MS Excel or similar program



## Calibration & adjustment (optional)

The calibration module can be used to check for deviations in the red-y smart series mass flow meters and controllers. The supplemental adjustment module permits manual or automatic adjustment.



## System requirements

The get red-y 5 software runs under Windows XP, Vista & 7. For required hardware, please refer to the operating manual of the software.

» Overview of the software modules on page 2



| Software / Modules   | Basic          | Dataloggermodule <sup>1</sup> | Calibrationmodule <sup>1</sup> | Adjustmentmodule <sup>1</sup> |
|--|----------------|-------------------------------|--------------------------------|-------------------------------|
| <b>Function</b>  |                |                               |                                |                               |
| Display device information such as reading, temperature, valve voltage | ●              | ●                             | ●                              | ●                             |
| Totalizer  | ●              | ●                             | ●                              | ●                             |
| Specify setpoint & adjust control speed <sup>2</sup>                   | ●              | ●                             | ●                              | ●                             |
| Assign device name   | ●              | ●                             | ●                              | ●                             |
| Switch units of measurement  | ●              | ●                             | ●                              | ●                             |
| Visualize & adjust PID parameters / Graphic tool                       | ●              | ●                             | ●                              | ●                             |
| Operating state monitoring   | ●              | ●                             | ●                              | ●                             |
| Zoom function <sup>3</sup>   | ●              | ●                             | ●                              | ●                             |
| Switch analog signals  | ●              | ●                             | ●                              | ●                             |
| Reset totalizer  | ●              | ●                             | ●                              | ●                             |
| Save & restore device data   | ●              | ●                             | ●                              | ●                             |
| Update device firmware <sup>4</sup>                                    | ●              | ●                             | ●                              | ●                             |
| Adjust display filter  |                | ●                             | ●                              | ●                             |
| Log measurement data   |                | ●                             |                                |                               |
| CSV export of logged measurement data                                  |                | ●                             |                                |                               |
| Verify calibration   |                |                               | ●                              | ●                             |
| Set full scale of measurement range                                    |                |                               |                                | ●                             |
| Set dynamic range  |                |                               |                                | ●                             |
| Manual adjustment  |                |                               |                                | ●                             |
| Automatic adjustment <sup>5</sup>                                      |                |                               |                                | ●                             |
| <b>Pricing</b>   | Free of charge | On request                    | On request                     | On request                    |

On request, other options may be enabled or added (e.g. for OEM applications). Please contact your sales representative for more information.

<sup>1</sup>Requires a USB dongle. Multiple modules may be combined on one USB dongle.  
<sup>2</sup>Only flow and pressure controllers *red-y smart controller* & *red-y smart pressure controller*  
<sup>3</sup>Magnifies screen display of momentary flow rate for all connected instruments  
<sup>4</sup>Must be released by Vögtlin Instruments AG  
<sup>5</sup>Requires a *red-y smart* reference device

Microsoft Excel, Windows XP, Windows Vista and Windows 7 are registered trademarks or trademarks of the Microsoft Corporation in the USA and/or other countries.

