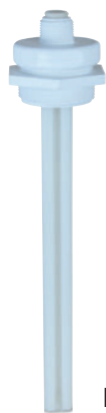


Application

The adjustable multi-point fitting enables users to install and adjust up to four Flowline level switches to any depth along the entire length of track. The fitting is typically applied in atmospheric day tanks, process vessels and waste sumps. Select the appropriate track length based upon your tank height and add one sensor car kit for each sensor to be installed on Smart Trak.

Features

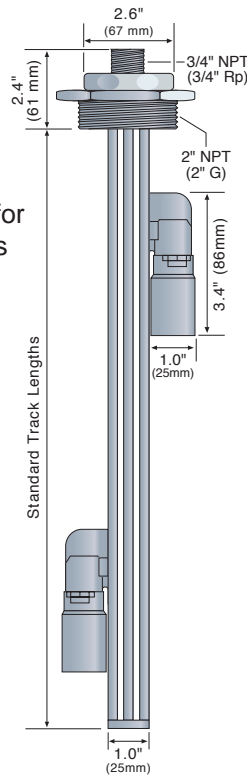
- ✓ Adjustable level sensor cars make setup or changes fast and simple
- ✓ Standard track lengths are easily cut to applied length in the field
- ✓ Rugged polypropylene construction for use with challenging corrosive liquids



Track Kit

Track kits are offered in standard lengths with a 2" process mount and 3/4" nipple for a Flowline controller or junction box.

LM10-1201



Typical Assembly

Specifications

Fitting

Track lengths:	US: 2', 4', 6', 8', 10' Metric: 1m, 2m, 3m
Adjustability:	Entire track length
Mixing velocity:	< 1.5 fps (.45 mps)
Process temp.:	F: -40° to 176° C: -40° to 80°
Pressure:	Atmospheric
Fitting material:	PP (20% glass fill)
Process mount:	1_01: 2" NPT 1_61: 2" G
Mount. gasket:	Viton®

Junction Box

Sensor inputs:	1-4 sensors
Terminal strip:	12 pole socket
Enclosure rating:	NEMA 4X (IP65)
Encl. material:	PP, UL94VO
Encl. rotation:	300° swivel base
Conduit entrance:	Single, 1/2" NPT
Temp. rating:	F: -40° to 158° C: -40° to 70°

Side Mount

Bracket material:	PP
Female threads:	1001: 2" NPT 1051: 2" G
Tank installation:	Bolt or plastic weld

Car Kit

The heart of the fitting is the adjustable sensor car. Each kit includes a 3/4" car with track mounting hardware. Order one car kit for each level sensor.



LM30-1001

Smart Trak

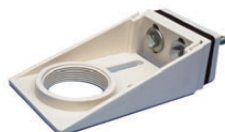
LM10-1 [] [] 1

Track length (1) (2) (3)

US	Metric
2 24" (61 cm)	1 100 cm (39.4")
4 48" (122 cm)	3 200 cm (78.7")
6 72" (183 cm)	7 300 cm (118.1")
8 96" (244 cm)	
0 120" (305 cm)	

Process mount (4) (5)

0 NPT (US)
6 G (Metric)



LM50-1001



Ordering Notes

- 1) Select the appropriate US or Metric track length based upon the maximum sensor depth and/or application tank height. Standard track lengths may be cut to custom lengths in the field.
- 2) Each track is provided with one 2" plug fitting less the required sensor cars.
- 3) Order one LM30-1001 (3/4" NPT) or LM30-1051 (3/4" Rp) sensor car kit for each level sensor to be installed on Smart Trak.
- 4) For integral wiring and/or conduit termination, order one LC05-1001 (NPT) or LC05-1051 (Rp) compact junction box.
- 5) For installation on open tanks, order the LM50-1001 (2" NPT) or LM50-1061 (2" G) side mount bracket.