



### Application

The single-point fitting enables users to install and extend a Flowline level switch through the top wall of the tank. Offered in PVC, PP and PVDF materials, the fitting is typically applied in bulk storage tanks, day tanks and waste sumps. Each fitting is built custom to your requirements. Select the appropriate material based upon your application liquid and specify the A-dimension, taking into consideration the installed sensor length.

### Features

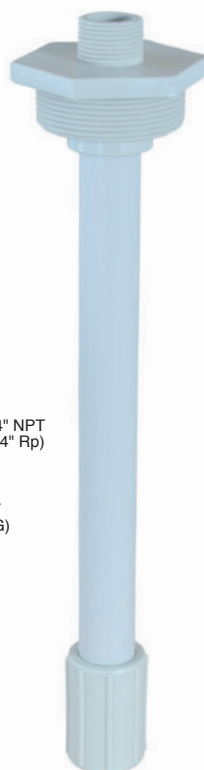
- ✓ Thermal or solvent welded fitting is built to your switch insertion length
- ✓ Offered in PVDF, PP and PVC material for maximum chemical compatibility

### Tech Tip

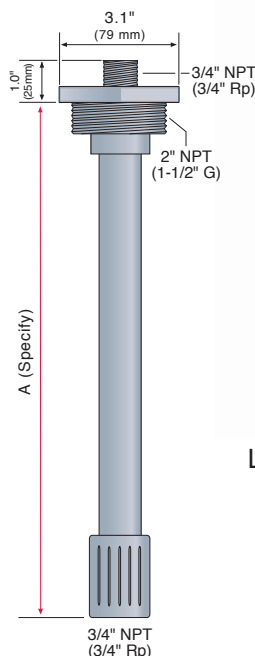
For easy field assembly, order the LM45-7001.0000 PVC plug fitting and adapter. Then solvent weld a 3/4" PVC schedule 40 pipe between the parts.



PVC = LM45-7001.0000  
 PP = LM45-1001.0000  
 PVDF = LM45-5001.0000



LM45-1001



### Specifications

<b>Fitting</b>	
Length:	6" to 10' (15 cm to 3m)
Process temp.:	F: -40° to 176° C: -40° to 80°
Pressure:	150 psi (10 bar) @ 25° C., derated @ 1.667 psi (.113 bar) per °C above 25° C
Fitting material:	70_1: PVC 10_1: PP 50_1: PVDF
Process mount:	_001: 2" NPT _061: 1.5" G
Mount. gasket:	Viton®
Sensor adapter:	3/4" NPT (3/4" Rp)

<b>Junction Box</b>	
Sensor inputs:	1 sensor
Terminal strip:	6 pole socket
Enclosure rating:	NEMA 4X (IP65)
Encl. material:	PP, UL94VO
Encl. rotation:	300° swivel base
Conduit entrance:	Single, 1/2" NPT
Temp. rating:	F: -40° to 158° C: -40° to 70°

<b>Side Mount</b>	
Bracket material:	PP
Female threads:	1001: 2" NPT 1051: 2" G
Tank installation:	Bolt or plastic weld



### Switch-Pak

LM45-01-

#### Fitting material

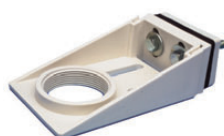
- 1 PP
- 5 PVDF
- 7 PVC

#### Process / sensor mount (1) (2)

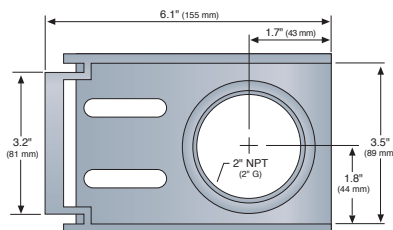
- 0 2" NPT / 3/4" NPT (US)
- 6 1 1/2" G / 3/4" Rp (Metric)

#### Dimensions (3) (4)

A Specify (PP)  
(PVDF)



LM50-1001



#### Ordering Notes

- 1) For integral wiring and/or conduit termination, order one LC06-1001 (NPT) or LC06-1051 (Rp) compact junction box.
- 2) For installation on open tanks, order the LM50-1001 (2" NPT), LM50-1061 (2" G), or LM50-1001-1 side mount bracket.
- 3) Specify the A-dimension at the end of the part number (ie: LM45-1001-17"). The A-dimension may be specified in 1/2" (1.3 cm) increments from 6" to 10" (15 cm to 3m). Switch-Pak will be solvent (PVC) or socket welded (PP and PVDF) per your length specification.
- 4) To order the plug fitting and 3/4" sensor adapter unassembled (without a 25 mm pipe) specify a zero A-dimension at the end of the part number (ie: LM45-1001.0000).